

Benches and Bird Houses for Smithville

Norman and Janet Jones

(512) 731-6050 norm.jones@customtechnology.com

July 2023

Summary and Goals for Benches and Bird Houses Donations

- Overall: we want to help the valuable Smithville Recreation Center including by donations and support
- Phase 1: provide 1-2 benches for use by Rec Center patrons at the main entrance and the Senior Center area and 1-2 bird houses in the vicinity
 - Benches used while waiting for transportation including public transportation for accessibility
 - Bird houses used for public enjoyment/education: complement larger project at Fisherman's Park: seek Nat Wildlife Fed "Certified Wildlife Habitat"
- Phase 2: support grant request by Jill Stube for Rec Center (e.g., the canopy)
 - Provide clear indication of local support and seed money

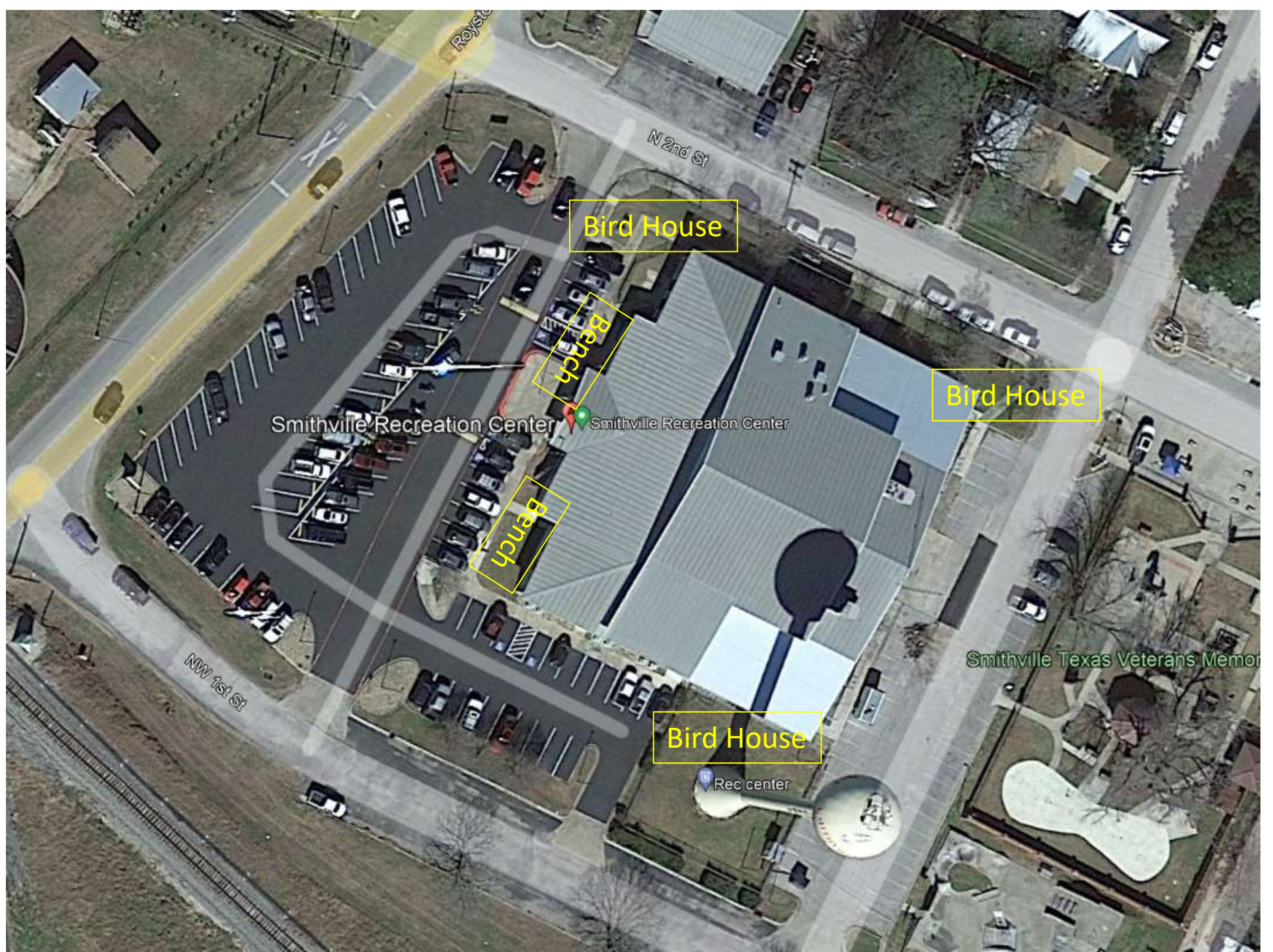
Summary and Goals (cont.)

- Phase 3: build a garden at the Rec Center
- Phase 4: add more benches and bird houses or other items elsewhere in Smithville

The City of Smithville Recreation Center is a city-owned 30,000 square foot multi-purpose facility. The building features a full-sized UIL standard gymnasium and theatrical stage. It is also equipped with meeting rooms, a kitchen, racquetball court, weight room, cardio room and both men's and women's restrooms with showers for your convenience. We offer many programs for adults and kids throughout the year.

Smithville Recreation Center

- Install two benches with first near Senior Center
- Install two bird houses in appropriate locations
- Install “National Wildlife Federation “Certified Wildlife Habitat Sign(s)”



Steel and Aluminum Bench

- We can donate 1-2 of these with small plaque (start with first bench)
- Provide comfortable, durable seating for up to two people
- Compact (50" wide)/unobtrusive
- Cost effective (Amazon)
- Should last for years
- Assess results and use for future plans
- Will include a plaque approximately 7x2.5"

First bench was ordered and delivered to be installed at Smithville Recreation Center



Planned Bench Features

https://www.amazon.com/gp/product/B096B6VMS3/ref=ppx_yo_dt_b_asin_title_o08_s00?ie=UTF8&psc=1

Grand patio Garden Bench, Outdoor Benches with Anti-Rust Aluminum Steel Metal Frame, Patio Seating for Front Porch Backyard Park Outside Furniture Decor, Weathered Blue

- Feature: This garden bench is with powder-coat frame finish, rust and UV resistant and fade-resistant, even with the harshest of seasons, it ensuring the bench looks great. With back flower design makes it so attractive.
- Strong Structure: This durable, full-size patio bench is made of powder coated steel, wider and stronger armrests and backrest design makes you feel more comfortable. Max load capacity reach 660 lbs.
- Perfect Size: Overall Dimension 49.17"(L) x 20.15"(W) x 33.81"(H),allows 2-3 people to sit. adds more fun for your kids when play or sit in the garden.

Bench on Bastrop at Chestnut and Main

- Plaque:
“in Honor of our parents Mary and George Vacek and Irene and Norman Jones
- Donated by us but this is expensive with lead



Plaque for Bench

7"x2.5" on bench back

In Honor of our Parents

Mary and George Vacek
Irene and Norman Jones



Summary of Bird Houses for City of Smithville

- A public service project for public spaces such as city parks or City Hall
 - Support of protecting the environment and education
- Provide houses for birds native to or migrating through our portion of Central Texas
 - Support “our feathered friends”
 - Help maintain a natural environment in rural or suburban areas
 - Provide supplemental shelter for wildlife (e.g., native birds) while discouraging predators
 - Houses are available for songbirds (Texas Bluebirds, etc.), ducks, or bats
- Install at locations such as Riverbend Park and Railroad Museum/Chamber area

Example of Native Bird House with Predator Guard and sign

- Illustrates configuration with Native Songbird (e.g., Bluebird)
- Duck house, Bluebird house would be similar
- This is mounted on a 8' T post
 - T post is normally 8' long in ranch, 10' on public parks
- Owl and bat houses mounted high on poles

Two bird houses (with poles, predator guards, etc.) will be provided for installation at two locations at Recreation Center (will coordinate with City Public Works)



National Wildlife Foundation

- It is possible to have areas in Smithville apply for and obtain NWF recognition as “Certified Wildlife Habitat”
- Riverbend Parks is already “Certified Wildlife Habitat”
- NWF Certified Community www.nwf.org/CommunityWildlifeHabitat/
- [Garden for Wildlife \(nwf.org\)](http://www.nwf.org/CertifiedWildlifeHabitat/GardenforWildlife) www.nwf.org/CertifiedWildlifeHabitat



CERTIFIED WILDLIFE HABITAT

Certify Your Habitat to Help Wildlife!

Wildlife habitat gardens are a haven for local birds, butterflies, and other wildlife. Tell us how your yard or garden provides habitat and the National Wildlife Federation will recognize it as a Certified Wildlife Habitat®.

Once certified, you can share your accomplishment and commitment to helping wildlife with your whole neighborhood by purchasing and posting an exclusive Certified Wildlife Habitat® sign.



The secure \$20 application processing fee and sign purchase directly support the National Wildlife Federation's programs to protect wildlife and its habitat.

- The **NWF program** certifies wildlife-friendly land for homeowners, businesses, schools, universities, places of worship, parks, and community-based organizations as community wildlife habitats
- Example locations:
 - Smith city property such as Fisherman's Park, Railroad museum park, etc.
 - Private property
 - Churches in Smithville

Smithville Has potential for “Bird City Certification” and Proposed Bird Houses can Support This



Significant effort but this could be a future, optional project

<https://tpwd.texas.gov/wildlife/birding/bird-city-texas/how>



Bird City Texas

Bastrop: Bird City Texas Certified Community

Learn more about the excellent work being done in Bastrop to involve their community, improve habitat, and create safer spaces for birds. Below you will find some details about Bastrop as well as a few examples of the local bird-friendly initiatives they have implemented that led to their Bird City Texas official certification. This list is not exhaustive but hopefully helps give insight on what local communities are doing to support birds and the spaces where they live. We hope these examples help you discover ways your community can work to protect birds and their habitat where you live.

Details

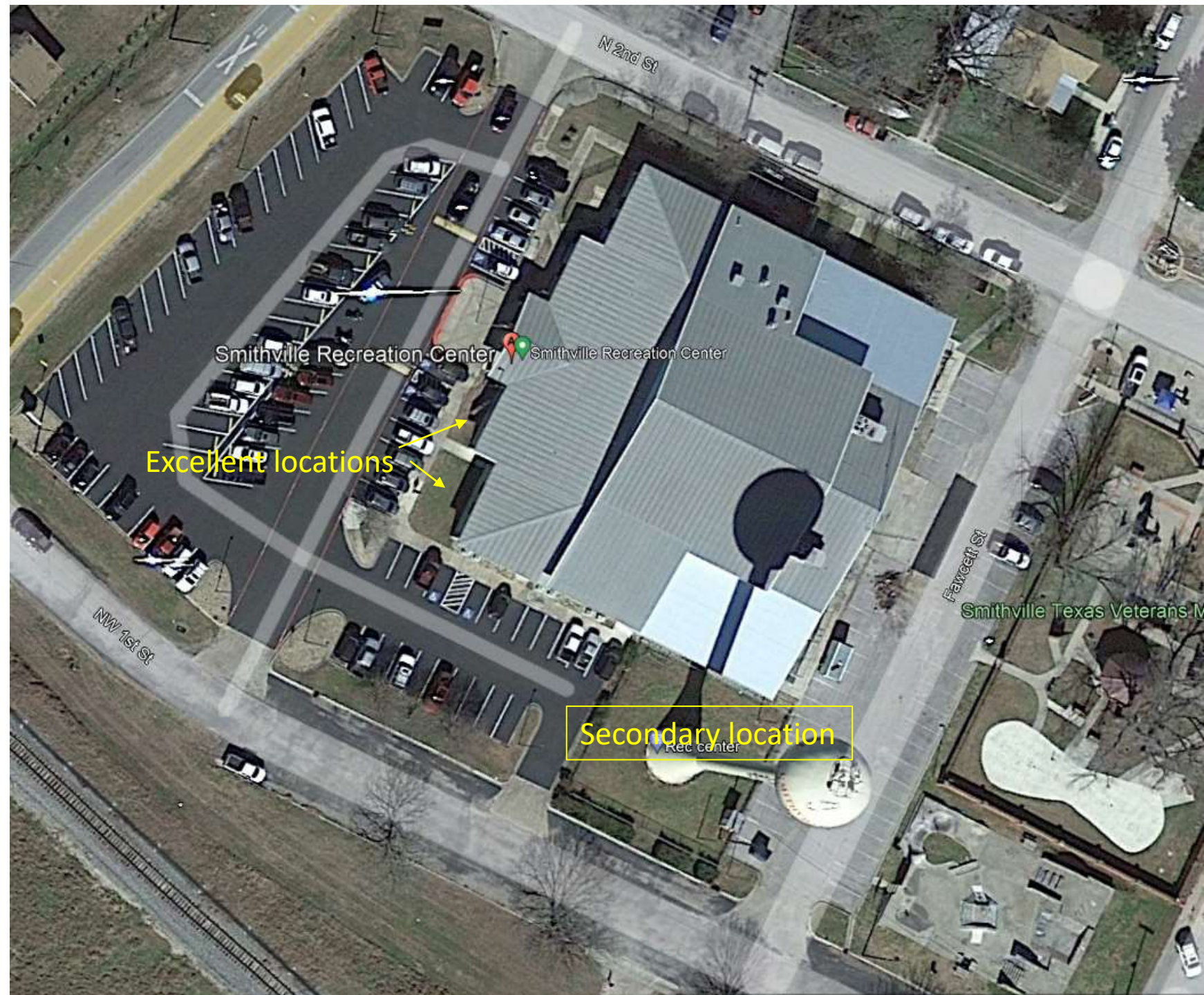
Bastrop Details

How to Apply Program Timeline

- **June 1, 2022:** Application period re-opens for all communities
- **November 1, 2022:** Applications must be started by this date. The portal will close to new applications on this date.
- **December 2, 2022:** 2022 Bird City applications due
- **January 31, 2023:** Annual report due for currently certified communities

Possible Garden(s) Locations

- Design and install garden(s) in appropriate area(s)
- Design for attractiveness, sustainability, and education for people and support of wildlife (e.g., birds)
- Design for limited maintenance (e.g., automatic irrigation)



Bike Rack Dedication Ceremony at Bastrop Public Library

Potential opportunity: make custom bike racks or other items for Smithville



- Encourage bicycling
 - Good for people, environment, and businesses
- Custom Bike racks to emulate the historic bridge in Bastrop
- Installed Oct 2022
- Made for Rotary Club by students and then a local Smithville area business